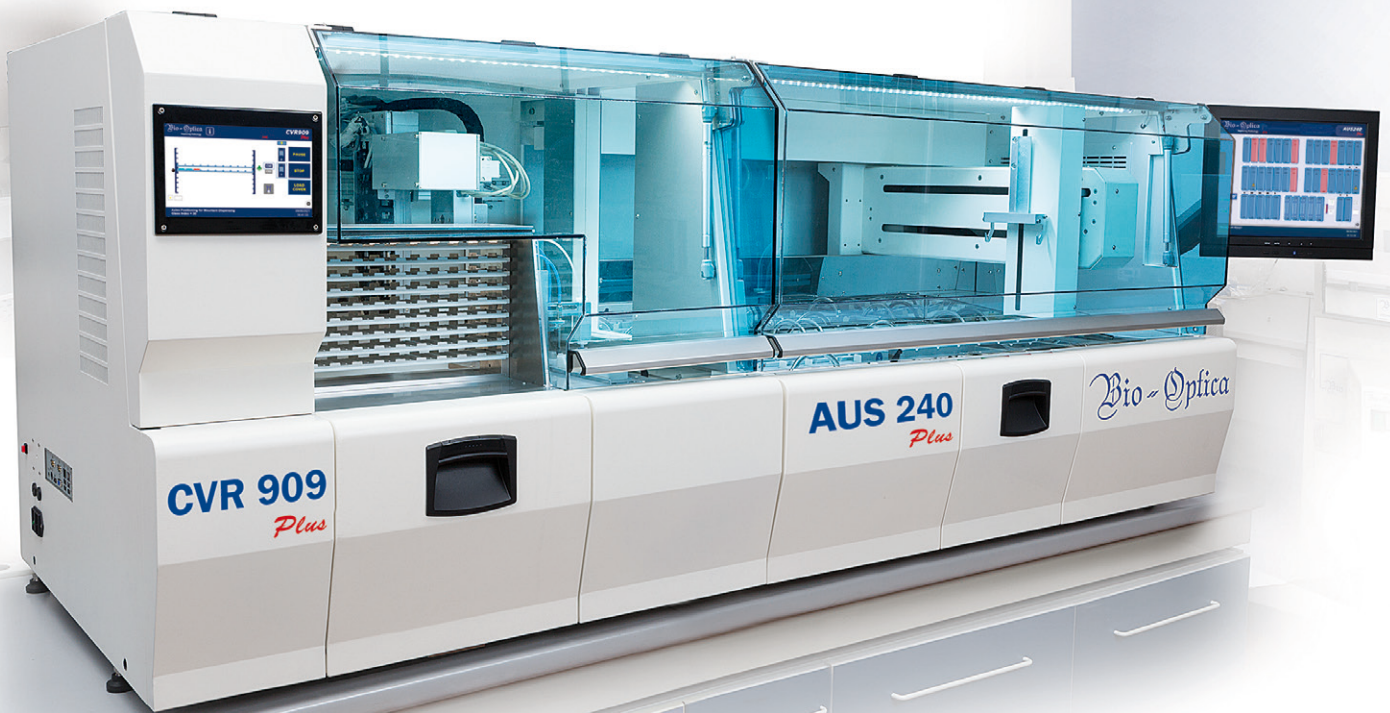


Bio - Optica

Improving Pathology

Automatic station

Stainer AUS240 *Plus* & Coverslipper CVR909 *Plus*



We have reshaped the standards of the anatomical pathology labs

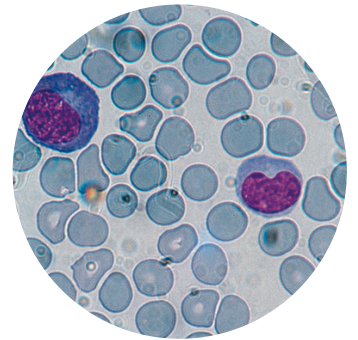
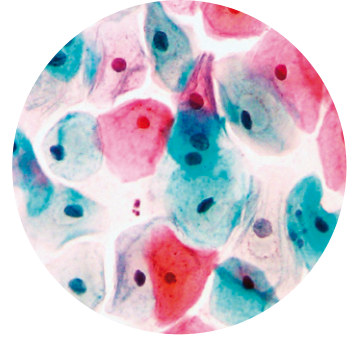
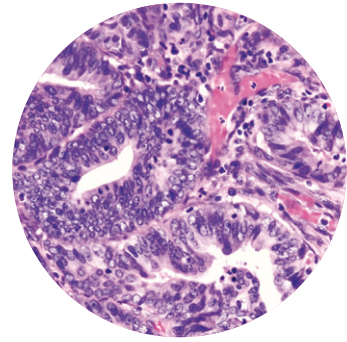
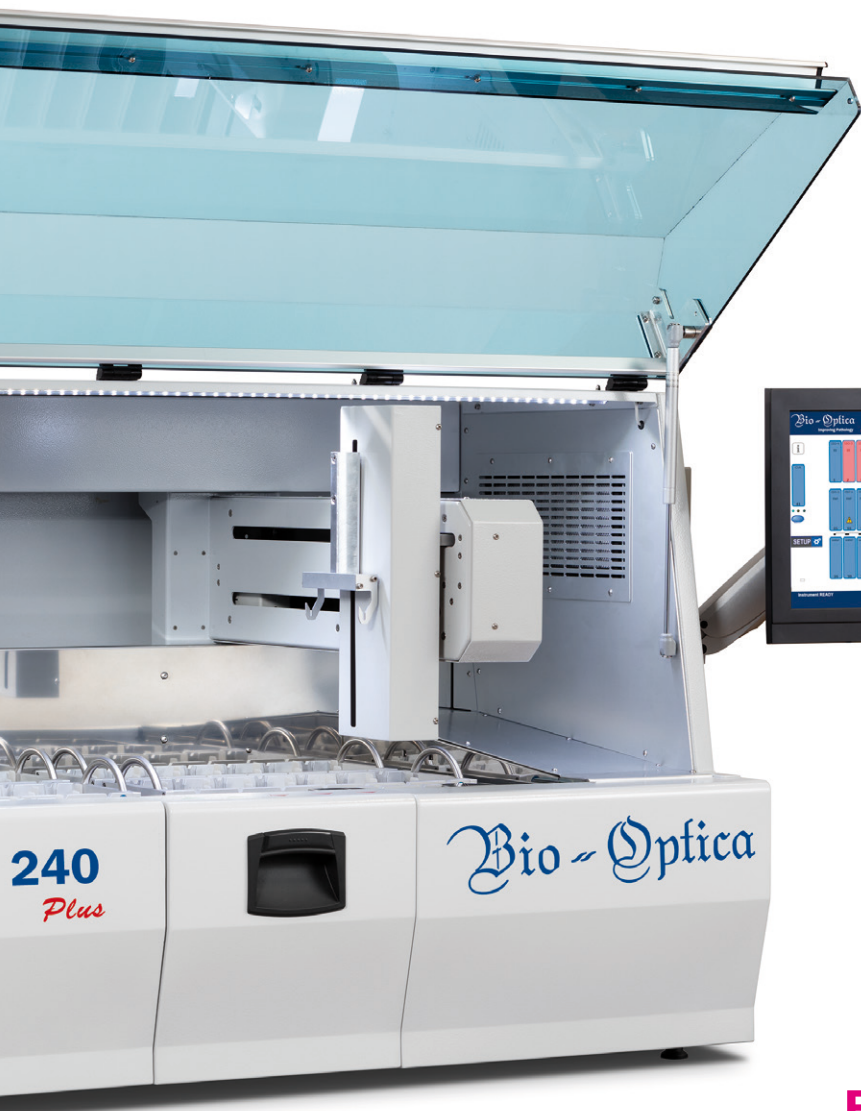
Versatility and reliability in your lab



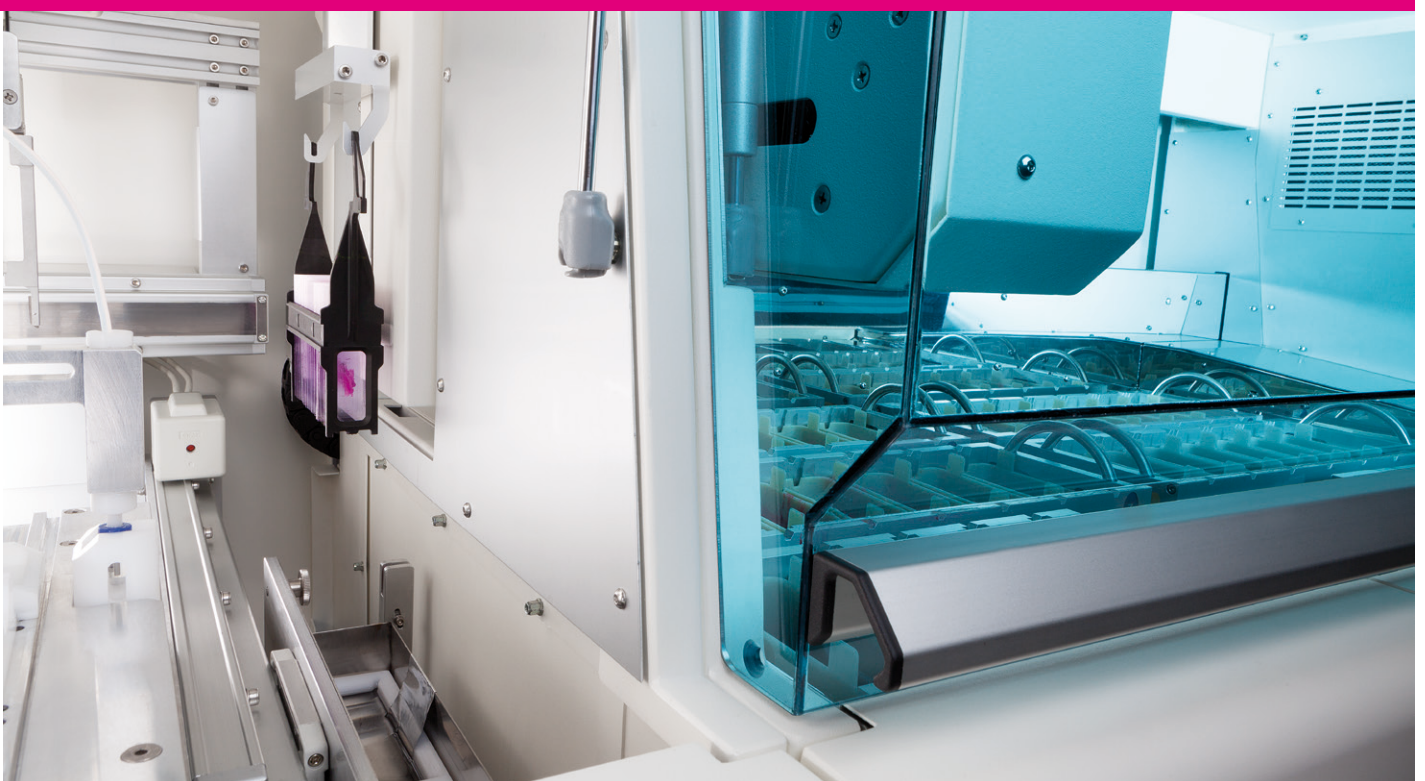
**Innovative and unique exit system of mounted glass slides,
which improves and simplifies the user's activity**

Instrument's general features:

- Integrated colour touch screen, with indication of all working parameters
- Modular system
- Intuitive and easy to use menu
- Multilingual software
- Acoustic and optical signal for the end of staining and mounting cycle
- Acoustic and optical warning in case of problems
- Possibility to load slide baskets continuously, even when the stainer is closed
- Automatic cleaning of the dispensing needle, after every cycle
- Vapour's aspiration system with integrated filter (no need of aspirated hoods)
- Possibility of interfacing the instrument with the LIS, to guarantee the traceability of mounted slides

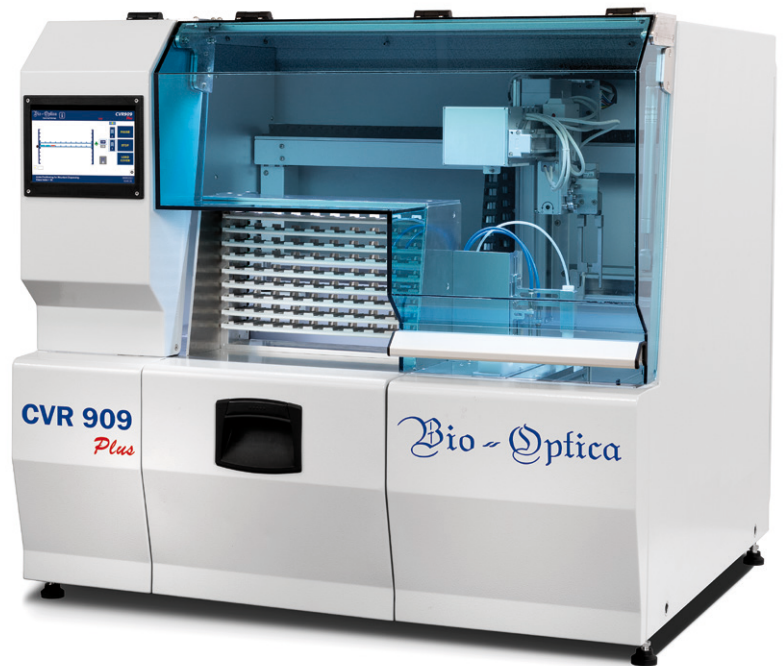


**Brilliant staining and
perfect mounting**



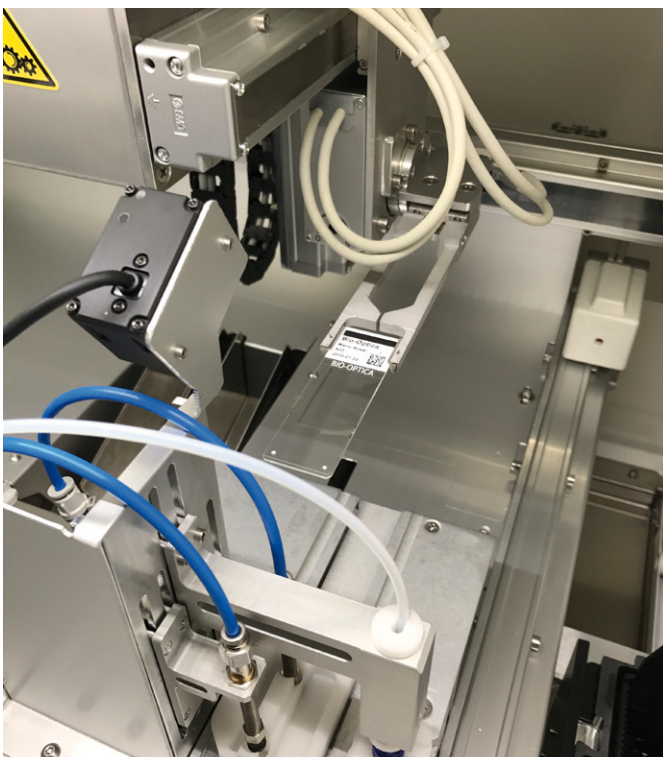
Coverslipper features:

- Possibility of loading continuously slide baskets (30 slides capacity each)
- It can mount coverglasses with different sizes (24x40/50/60 mm), with rapid holder substitution
- Possibility to work in “wet” or “dry” mode
- Possibility to verify the status of the covered slides from the display through 3 different colours indicator
- Regulation of dispensing offset (position, quantity and speed) without needle substitution
- Mounting medium bottle with level sensor, rapid connection and easy to substitution
- Frontal exit for empty slide baskets
- Integrated 2D-barcode reader: it is possible to connect the coverslipper to the lis in order to ensure the traceability of the mounted slides
- Integrated aspiration system



Innovative system with advanced technology

Perfect mounting and software designed around the operator to simplify and speed up the work in the lab



Mounting steps

The coverglass is taken by a suction cup electronic system while the dispensing needle moves from its stand-by position in the solvent
(Img. 1)

The glass slide is brought to the mounting site by a mechanical arm and the medium is dispensed on the section
(Img. 2)

The coverglass is mounted through a particular movement of the suction cup system which avoids bubble air formation
(Img. 3)

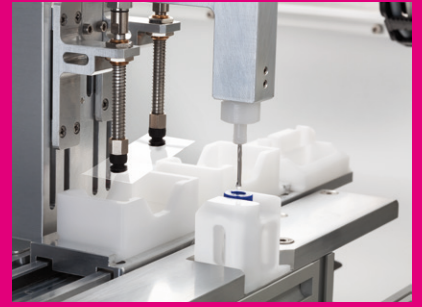
The mounted slide is put on a dedicated tray and the dispensing needle comes back to stand-by position into the cleaning solvent
(Img. 4)

Revolutionary and unique automatic mounted slides exit system

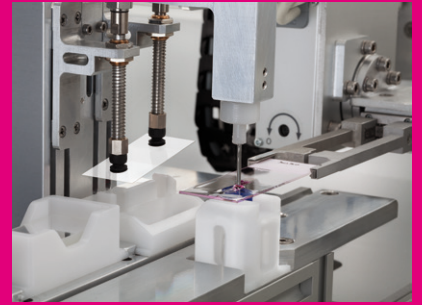
In spite of the other coverslippers on the market, our instrument is able to put the mounted slides directly on dedicated trays in order to avoid waste of time for the users.

When the tray is complete, it is automatically pushed forward in order to:

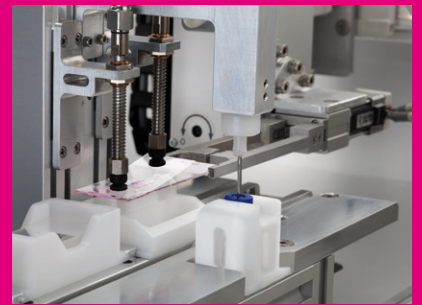
- advise the completion of the tray
- ease the catch for the user



Img. 1



Img. 2



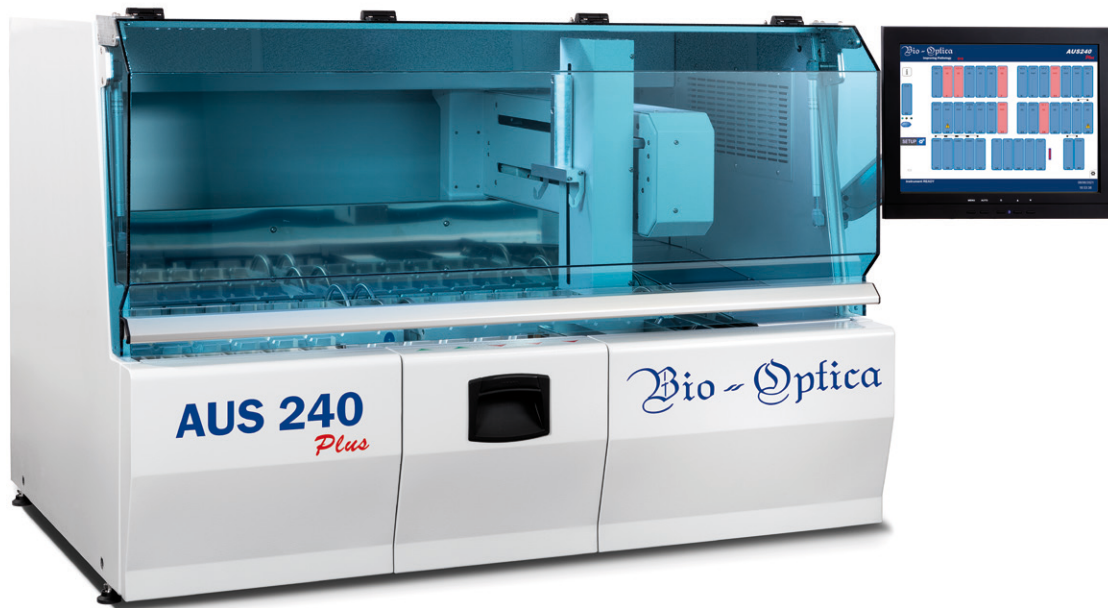
Img. 3



Img. 4

Bio - Optica

AUS 240 Plus



Stainer features:

- Continuous loading of slide baskets (30 slides capacity each)
- Simultaneous staining of 10 baskets (using the same staining protocol)
- 40 total stations (28 for reagents, 5 for washing, 2 for drying, 2 for loading and 3 for unloading)
- Basket agitation “waving” which guarantees reagent homogeneity and reduction of residue
- Possibility to save 18 programs with 25 steps each
- Modern interface colour touch screen 15” and possibility of transferring the reports on external memory
- “Antidripping System” completely settable by the user through software
- Integrated UPS and vapour filtration system
- “Reagent Management System” which allows to set the maximum number of baskets which can pass through a reagent. The display advises the user about the status of each station
- Possibility to set a “Priority Protocol”
- Possibility to stain macro slides, thanks to the optional adaptor
- Settable password (one level)

New model, with improved performances



CONSUMABLE

Bio-Optica microscope slides

Bio-Optica microscope slides, cleaned, degreased without dust and scratches, are available in different types and colours. They can also be used with printers.



Bio-Optica coverglasses

Bio-Optica coverglasses are of high quality and without selective absorption. Available in three different measures (24x40, 24x50 and 24x60 mm), they are designed to work in the automatic coverslipper.



Bio-Optica mounting medium

Biomount HM, a xylene-based medium for histologic and cytologic samples; recommended for the automatic coverslipper.



Bio-Optica stains

Bio-Optica high quality routine stains guarantee brilliant colours and reproducible results. They include reagents for histology and cytology. The protocols are optimised for the use into the automatic station and they guarantee high quality staining.

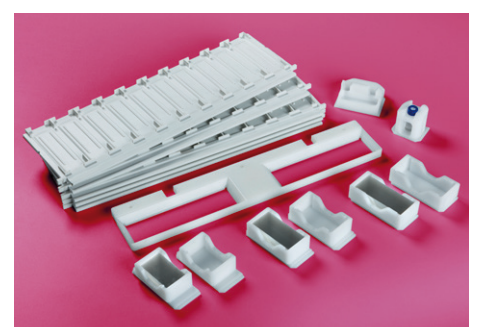


ACCESSORIES

Trays and holders

Coverglasses holders with three different measures. Dispensing needle cleaning system to guarantee the continuous work of the instrument without interruptions and obstructions. Dedicated slide trays (10 places) which can be extracted and piled for an easy transport.

Bio-Optica also provides adaptors for slide baskets of the most popular automatic stainers on the market.



● COVERSLIPPER	CVR 909 Plus	40-500-000
Dimensions and weight	Dimensions (l x h x p)	860 x 780 x 770 mm
	Worktop (l x p)	860 x 770 mm
	Weight	80 Kg
Electrical data	Power supply	115 ÷ 230 V
	Frequence	50 ÷ 60 Hz
	Electrical power	0,6 kW
Working environment	Temperature / Humidity	15 ÷ 30 °C / 70% max
Productivity		180 slides/hour (directly on the tray)
Mounting Medium	Bottle volume	500 ml
Mounted slides output		9 trays with 10 places each

● STAINER	AUS 240 Plus	40-400-350
Dimensions and weight	Dimensions (l x h x p)	1220 x 780 x 770 mm
	Monitor (l)	+ 400 mm
	Worktop (l x p)	1220 x 770 mm
	Weight	155 Kg
Electrical data	Power supply	115 ÷ 230 V
	Frequence	50 ÷ 60 Hz
	Electrical power	0,8 kW
Working environment	Temperature / Humidity	15 ÷ 30 °C / 70% max
Internal composition	Reagent stations	28 (485 ml capacity)
	Rinse stations	5 (with pressure and flow regulator)
	Loading stations	2
	Unloading Stations	3
	Heated stations	2 (60 °C ±1 °C)
Productivity		10 basket of 30 slides maximum, with the same protocol
Connections	Loading tube H ₂ O (Ø)	10 mm
	Exhaust pipe H ₂ O (Ø)	18 mm (¾")
Exit	USB ports	4
	Free contact	1

Scan here to watch the video



Headquarter
Bio-Optica Milano S.p.a.
via San Faustino, 58
20134 Milan - ITALY

Telephone
+39 02 2127131

Fax
+39 02 2154155

Mail
info@bio-optica.it

Web
www.bio-optica.it

Bio - Optica